

THANK YOU!

**With your help, our shops raise over
£1.5 million a year towards our care**

Check our donations guide below on what we always need and turn your preloved items into support for families in your community needing urgent help.

DID YOU KNOW?

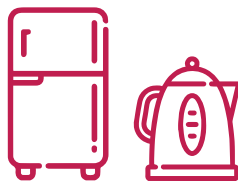
We collect quality used furniture and other large items, including electricals, for **free**. Smaller donations are happily accepted in our shops.



**Large &
small furniture**



**Homewares
& bric-a-brac**



**Electrical items
complete with a plug**



**Collectables
& antiques**



Clothing



**Handbags, shoes
& jewellery**

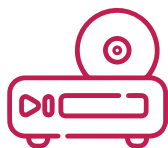


**Gym
equipment**

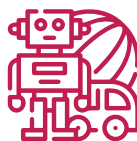
**ARRANGE A
FREE FURNITURE
COLLECTION**



Books



**CDs, DVDs
& video games**



**Toys &
games**



**Nursery & children's equipment
with original fixings & manufacturer's manual**

giftaid it

**MAKE YOUR DONATION WORTH 25% MORE WITH
GIFT AID. IT'S SIMPLE TO SIGN UP AND FREE FOR YOU.**

katharine
house
hospice 

embracing life and living



www.khhospice.org.uk

Registered Charity No. 1011712

Company Limited by Guarantee Reg No. 03949314